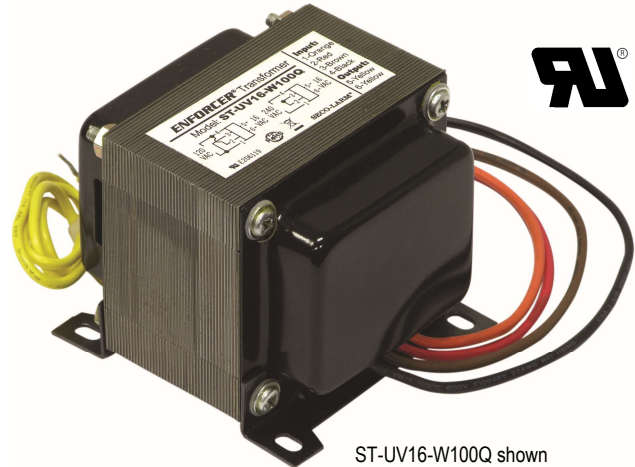


Open-Frame Transformers

- ST-UV16-W50Q** 16VAC/50VA
- ST-UV24-W50Q** 24VAC/50VA
- ST-UV16-W100Q** 16VAC/100VA
- ST-UVDA-W100Q** 24/28VAC/100VA
- ST-UVDA-W180Q** 24/28VAC/180VA



ST-UV16-W100Q shown

Features

- Shielded windings to reduce Electromagnetic Interference (EMI).
- Selectable input voltage.
- Selectable output voltage*.
- UL recognized.

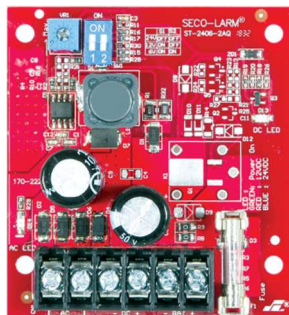
Specifications

Model	Output Voltage	Amperage	VA	Input Voltage
ST-UV16-W50Q	16VAC	3.12	50VA	120/240 VAC 50/60Hz
ST-UV24-W50Q	24VAC	2.08	50VA	120/240 VAC 50/60Hz
ST-UV16-W100Q	16VAC	6.25	100VA	120/240 VAC 50/60Hz
ST-UVDA-W100Q	24VAC	4.16	100VA	120/240 VAC 50/60Hz
	28VAC	3.57	100VA	120/240 VAC 50/60Hz
ST-UVDA-W180Q	24VAC	7.50	100VA	120/240 VAC 50/60Hz
	28VAC	6.43	100VA	120/240 VAC 50/60Hz

*ST-UVDA-W100Q and ST-UVDA-W180Q only

Match the ENFORCER Open-Frame Transformers with the ENFORCER Series Power Supply/Chargers

- Convert low-voltage AC input power to low-voltage DC output power.
- Regulated and filtered output voltage.
- Short-circuit protection.
- Thermal protection and compensation.
- Built-in backup battery charger.
- Switches to backup battery automatically in case of power loss.
- Fused protection for battery charger.
- 2 LEDs to indicate AC power input and DC power output status.
- Compatible with lead acid or gel-type rechargeable battery.
- Reverse polarity protected.



ST-2406-2AQ shown

- ST-1206-1.5AQ** 1.5A continuous, 6/12 VDC
- ST-2406-2AQ** 1.5A continuous, 6/12/24 VDC
- ST-2406-3AQ** 2.5A continuous, 6/12/24 VDC
- ST-2406-5AQ** 4A continuous, 6/12/24 VDC
- ST-2406-7AQ** 7A continuous, 6/12/24 VDC
- ST-2406-10AQ** 9A continuous, 6/12/24 VDC

Transformer Selection Table

Operating voltage	ST-1206-1.5AQ	ST-2406-2AQ	ST-2406-3AQ	ST-2406-5AQ	ST-2406-7AQ	ST-2406-10AQ
6VDC	12VAC/20VA	12VAC/20VA	ST-UV16-W50Q 16VAC/50VA	ST-UV16-W100Q 16VAC/100VA	ST-UVDA-W180Q 24-28VAC/180VA	ST-UVDA-W180Q 24-28VAC/180VA
12VDC	ST-UV16-W50Q 16VAC/50VA	ST-UV16-W50Q 16VAC/50VA	ST-UVDA-W100Q 24-28VAC/100VA	ST-UV16-W100Q 16VAC/100VA	ST-UVDA-W180Q 24-28VAC/180VA	ST-UVDA-W180Q 24-28VAC/180VA
24VDC	N/A	ST-UV24-W50Q 24VAC/50VA	ST-UVDA-W100Q 24-28VAC/100VA	ST-UVDA-W180Q 24-28VAC/180VA	24-28VAC/210VA	28VAC/350VA

SECO-LARM® U.S.A., Inc.

16842 Millikan Avenue, Irvine, CA 92606

Phone: (949) 261-2999 | (800) 662-0800 Fax: (949) 261-7326

Website: www.seco-larm.com Email: sales@seco-larm.com



Copyright © 2021 SECO-LARM U.S.A., Inc. All rights reserved.

All trademarks are the property of SECO-LARM U.S.A., Inc. or their respective owners. The SECO-LARM policy is one of continual development. For that reason, SECO-LARM reserves the right to change prices and specifications without notice. SECO-LARM is not responsible for misprints.

SECO-LARM® ENFORCER® CRIMEBUSTER® CBA® SLI®

PL_Open-Frame Transformers_210330.docx